

Message from the Head teacher:

Hello All,

Another lovely week at Forest Approach, our students have enjoyed buying poppies and Remembrance Day accessories.



The autumn weather is here, so please can we remind you to send in winter clothing such as a warm jacket, hat, scarf and gloves labelled with your child's name.

Thank you for your help in keeping the school as safe as possible for us all.

Parents – please remember to keep a 2 meter distance when picking up students.

Stay Safe

Mary Bickmore

Caudwell Children's Charity

Caudwell Children's Charity is offering sensory packs for parents containing useful resources.

Parents only have to pay 20% as Caudwell Children's Charity will pay 80% of the cost.

This is a fantastic opportunity to support your child's additional needs even further whilst they are at home.

For more information please follow the link below:

<https://getsensorypacks.com/>



Message from the Deputy Head:

Dear All,

What an amazing week we've had here at Forest Approach.



We have all enjoyed coming to school today, dressed in yellow or in our pyjama's, to raise money for Children in Need.

We have raised a whopping £54.85!!!!



Well Done Everyone!

Have a fantastic weekend.

Oak Class

The boys have been enjoying their outside time. They have been learning the importance of sharing and working together. They have all been learning about the importance of exercise as part of our Nutrition and Fitness



Parents Evening

As always during parents' evening, we would like our students' parents to have the opportunity to meet specialists that work within our school and have the opportunity to ask questions, seek advice and to discuss referral.

Unfortunately, we cannot provide face-to-face meetings at this time. However, I would like to offer you the opportunity to participate in virtual meetings.

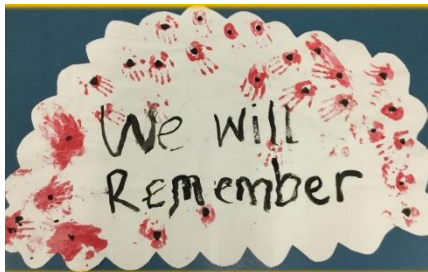
We have dedicated certain days during the week commencing 16th November for parents evening consultations.

If you would like to book a 15 minute slot with a specialist for a consultation, please email them directly and they will be allocated on a first come first served basis.

Timetable and Specialists details are on the last page of this newsletter.

Saplings Class

This week Saplings class created an assembly as part of Remembrance Day. They made a lovely Remembrance Day sign using their hand prints as poppies.



Here is a link to view their lovely assembly:

<http://limeacademyforestapproach.london/media/4112/remembrance-day-saplings-assembly.pdf>

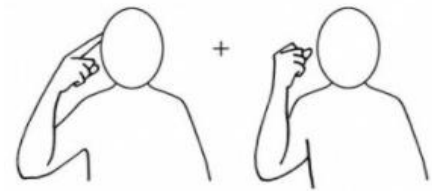
Harvest – Food Bank

We are asking for donations of tinned and dry goods for Harold Hill Food bank. Please send these items in with your child and class teams will add them to the Harvest Collection.



Makaton Sign of the Week

This Makaton week's sign of the week is... 'To remember' linked to Remembrance Day



Dinner menu w/c 16th November

	Week 2
Mon	Beef Burger Cheese Onion Puff Potato Dippers, Pasta, Sweet Corn/Carrots, Salad Iced Smoothie
Tues	Pork Sausage Jacket Potato Tuna or cheese V (doesn't come with another carb) Wedges, Pasta Mixed Vegetables, Salad Jam Doughnut
Wed	Salmon Fillet Homemade Cheese Pizza V Oven Chips, Pasta Broccoli/Sweet Corn, Salad Victoria Sponge
Thurs	BBQ Chicken Vegetarian Sausage Roll Herb Diced Potatoes, Rice Peas Green Beans/ Salad Artic Roll
Fri	Battered Fish Fillet Quorn Bolognaise V Oven Chips, Rice Peas/Cauliflower, Salad Ice Cream



	Day	Times	Email address
Speech and Language Therapist Candice Smith Katherine Butterick	Thursday 19 th November	3:00pm – 5:00pm	Candice.Smith@nelft.nhs.uk
Speech and Language Therapist <u>Abeer Essa</u>	Wednesday 18 th November	3:30pm – 5:30pm	Abeer.Essa@nelft.nhs.uk
Lead Adviser SEND Havering Barbara Faulkner	Friday 20 th November	9:00am – 12:pm	Barbara.Faulkner@prospects.co.uk
Occupational Therapist Donna <u>Boygle</u>	Monday 16 th November	10:30am – 12:30pm	sensitivityot@btinternet.com
Occupational Therapist Lizelle Keyser	Tuesday 17 th November	9:15am – 12:15pm	Lizelle.keyser@limetrust.org
Family Support Helen Standen	Monday 16 th Wednesday 18 th Thursday 19 th November	3:00pm – 4:00 pm	office@limeacademyforestapproach.london
Evidence for Learning support TEACCH Certified Practitioner Zuzanna Gromska 	Monday 16 th Wednesday 18 th Thursday 19 th November	3:00pm – 4:00 pm	office@limeacademyforestapproach.london
Welfare Officer Jo Ruff	Monday 16 th November	3:30pm – 5:30 pm	office@limeacademyforestapproach.london

